

ELEMENTARY ALGEBRA

MATH 50 ONLINE, SUMMER 2014
SECTIONS #48413, 48414 & 48415 (4 UNITS)

INSTRUCTOR



Name STEPHEN TONER
Office Bldg 31 (Science), office 51 (by appt. only in summer)
Phone 760.245.4271 ext. 2770 (not checked regularly in summer)
Email Stephen.Toner@vvc.edu
Websites www.stevetoner.com, www.MathVideos.Net
Office Hours No office hours during the summer session.

COURSE

DESCRIPTION

Course covers a review of arithmetic operations with whole, decimal, fractional and signed numbers, exponential notation, percentages, and order of operations. Algebraic expressions, solving and graphing linear equations and inequalities, polynomial operations and polynomial factoring, rational and radical expressions and equations, quadratic equations and solutions to quadratic equations are also covered.

PREREQUISITES

Math 10 with a grade of "B" or better, Math 12 with a grade of "C" or better, or by eligibility by placement on the VVC assessment exam.

TEXTBOOK / MATERIALS



INTRODUCTORY ALGEBRA, 2ND EDITION, BY MILLER/O'NEILL/HYDE.

Online access at <http://www.connectmath.com/>. You will need an access code. You can purchase the Connect Plus access code directly from the website (\$92.50) or from the Rams bookstore (packaged with a paper version of the text for \$109.70).

Online access is required and includes complete digital access to your e-books, videos and homework. Your course Code is **6MVP3-3KREN**. You may begin the registration process at Connect Math beginning June 9th, but the class will not officially begin until Monday, June 16th.

The 2-week financial aid code for this course is **05185-3A583-BFD2B-B3ECD**. Note that it does not give add an additional two weeks to your course. You will need to extend your account BEFORE the end of the two weeks.

HOMWORK

Practice is a vital component in learning mathematics. I have prepared lecture videos for you to teach you all the material. This is your primary source of learning (see directions below). There are also author-produced videos and animations that can be found at the Connect Math website in the Resources area. You will save valuable time by watching my lecture videos for each section prior to starting the homework assignments.

You may take each homework assignment as many times as you wish, and I will only count the highest grade for each assignment. I will drop the lowest 5 scores from your homework assignments at the end of the term before calculating your final grade.

LECTURE NOTES AND VIDEOS

First, you will want to go to www.mathvideos.net, my video website, and click on the Elementary Algebra button. Above each pair of chapters, there is a link to "download blank lecture notes". Please download and print these out. For each lecture in the table, there is a video lecture I have created to teach you the material. **Watch the videos and take lecture notes just as if you were in class. This is an essential part of the class.**

CHAPTER TESTS

We will have 9 chapter tests and one proctored final exam. For each chapter test, you will only be allowed ONE 90-minute attempt. I will drop your lowest-scoring chapter exam. No calculators, notes or "cheat sheets" may be used on any of the chapter tests.

DISCUSSION BOARD & RESPONSE REQUIRED ASSIGNMENTS (RRA'S)

You are expected to participate in each of the weekly discussion boards which will be located at the Blackboard site for the class. Each week you should comment on at least one of that weeks' threads. Each of your posts should **contribute** to the conversation and not just be a short "LOL" type of post. Most of the boards (other than the social forum) will be set up so that you cannot view your classmates' posts until you have posted yourself.

There will be several short RRA's (Response Required Assignment) this summer. These will be administrative in nature.

GRADING

It is your responsibility to be aware of your grade. Your final grade will be determined as follows:

Online Chapter Tests	30% of your grade	A: [88,100)
Online Homework	25% of your grade	B: [78,88)
Discussion Board / RRA Assignments	10% of your grade	C: [70,78)
Comprehensive Final Exam (see page 5)	35% of your grade	D: [65,70)
		F: [0, 65)



Your official grade will be found in the Grade Book at Connect Math, not within Blackboard.

SUMMER 2014 CALENDAR

Summer Session Begins	June 16
Last Day to Drop and Still Receive a "W" grade	July 10
Last day of the course	August 7 (campus will be closed Aug 8-9)

PHILOSOPHY

While taking an online class is convenient for your schedule, the same dedication is necessary as for an on-site class. If this class were on-site during a 16-week semester, you would be spending about 5 hours per week in class and travel to class, plus another 6-8 hours per week doing homework. That would amount to about 11-13 hours per week to be successful. This is a summer class which is only 8 weeks long, meaning you really should be spending about 24 hours per week to be successful. **Basically, this means you should schedule an average of 4 hours per day, 6 days a week.** Anything short of that is undermining your classroom experience and chances of success. (I understand there will be some days where you spend 7-8 hours per day, while others you only work for about an hour.)

CALCULATORS

*Calculators are **not** allowed at any time in this course. Most of the homework problems have been chosen such that a calculator really should not be needed at all. While I cannot monitor what you are doing at home, you are on your academic honor not to be using one. If it is discovered that you are using one, it will be considered academic dishonesty and you will be turned in to the Office of Student Services for academic dishonesty.*

POLICIES

SCHOLASTIC DISHONESTY

While students may work together on the researching of any assignment, it is expected that each of their writing assignments reflect substantial individual effort. Any student who commits plagiarism or is found to have cheated on a scheduled exam is subject to a zero score for that specific exam which may result in a term grade of "F" for this course. Students should be aware that cases of cheating and/or plagiarism will be forwarded to the appropriate college administrator promptly. The college administration has a range of sanctions that may be imposed including, but not limited to, academic suspension or expulsion from the college.



IT IS EXPECTED THAT YOU ARE ALONE WHEN TAKING ANY CHAPTER EXAMS. YOU MAY NOT SEEK ANYONE'S ASSISTANCE DURING THESE EXAMS. THERE SHOULD NOT BE ANYONE LOOKING OVER YOUR SHOULDER HELPING, PROMPTING, OR CORRECTING YOU. IT IS ALSO ASSUMED THAT YOU ARE TAKING ALL EXAMS WITHOUT THE AID OF A CALCULATOR.

ATTENDANCE

If this were an on-campus class, you would be required to attend class every day. After 4 hours of absence, you could be dropped from this class. As an online class, the same rules need to hold. **If you do not log in to Connect for 5 straight days during the summer session, you will be considered to be excessively absent and may be dropped. It is your responsibility to keep your enrollment status current. You risk an "F" if you stop attending without officially withdrawing.**

Class attendance is not a measure of performance or proficiency. Whether a student is just physically present in the class is not a valid basis for grading. Reference Title 5 Section 55002 of the California Code of Regulations: (A) Grading Policy. The course provides for measurement of student performance in terms of stated course objectives and culminates in a formal, permanently recorded grade based upon uniform standards in accordance with section 55758 of this Division. The grade is based on demonstrated proficiency in the subject matter and the ability to demonstrate that proficiency, at least in part, by means of written expression that may include essays, or, in courses where the curriculum committee deems them to be appropriate, by problem solving exercises or skills demonstrations by students.

STUDENT ACCESS

Students with special needs are encouraged to meet with instructors to discuss the opportunity for academic accommodation and be referred to disabled student program and services per Administrative Procedure (AP 3440).

If you have a learning disability or physical need that requires special accommodation, please advise me prior to 06-23-14 (the start of the second week of class).

MISCELLANY

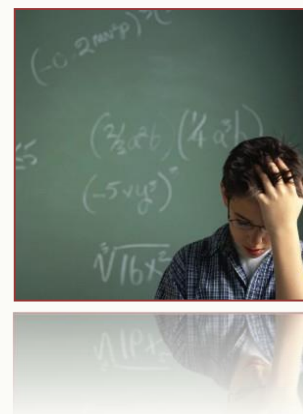
ACADEMIC SUPPORT

You are strongly encouraged to get tutoring or go to the Math Success Center, study in groups, and see me for help outside of class. All of these are free! Students that get help outside of class are typically much more successful than those that do not.

Summer Math Success Center hours are:

Monday-Thursday 9:00 AM - 5:00 PM (starting the second week of class)

The Math Lab is located in building 42 (the Academic Commons). Outside of these those hours, please go to the information booth at the east end of the Tech building to sign in for tutoring help. Tutoring help is limited during summer.



STUDENT LEARNING OUTCOMES

Upon completion of the course the student can:

1. Graph linear equations and inequalities.
2. Factor polynomials.
3. Solve a system of linear equations.
4. Simplify rational expressions.
5. Solve first and/or second-degree polynomial equation
6. Translate words into algebraic expressions and equations.

IMPORTANT NOTES ABOUT TECHNOLOGY

This is an online course, requiring reliable computer access. Please ensure your computer is in good repair at the start of the semester. It is suggested that before any major assignments, the computer be re-booted to clear any memory caches which may cause issues while testing. While documented outages may occur, it is the student's responsibility to meet all deadlines in this course.

At the start of the semester, please go to www.connectmath.com/downloads and install the latest versions of many key plug-ins and movie players. If you ever find your computer running slow, sometimes the cause may be too many versions of Java running in your system. If this is the case, go into your Control Panel, uninstall both Java and Aleks. Then go to the download page mentioned above and re-install Java first, followed by Aleks. This will solve many of the issues that students typically face.

In the event of "strange things happening" on your computer, close and re-start your browser. This sometimes solves the problem. You can also call Blackboard help directly at (760) 245-4271, extension 4788. The tech support at Connect Math is (949) 390-2095. There are computers available for you to use on campus, Mon through Thursday in both the Math Success Center, building 42, and the ATC, building 21. These computers have all the necessary plug-ins installed already.

The schedule for the term is listed below. I highly suggest you work as far ahead of the schedule as you can, just in case you have emergencies in your personal life, or in case you run into material which you find rather challenging.

OUR CLASS SCHEDULE

Week	Dates	Section	Deadline
0		Early Start...	Connect Math course becomes available on Monday, June 9th, 2014
1	06.16 - 06.22	Ch. 1; Ch. 2a	All HW and Chapter Test for Ch. 1 must be submitted by 11:59 PM on Sunday, June 22
2	06.23 - 06.29	Ch. 2b; Ch. 3a	All HW and Chapter Test for Ch. 2 must be submitted by 11:59 PM on Sunday, June 29
3	06.30 - 07.06	Ch. 3b; Ch. 4a	All HW and Chapter Test for Ch. 3 must be submitted by 11:59 PM on Sunday, July 6
4	07.07 - 07.13	Ch. 4b; all Ch. 5	*July 10th, 2014 is the last day to drop the course and still receive a "W" grade. All HW and Chapter Test for Ch. 4 must be submitted by 11:59 PM on Thursday , July 10 All HW and Chapter Test for Ch. 5 must be submitted by 11:59 PM on Sunday, July 13
5	07.14 - 07.20	Ch. 6	All HW and Chapter Test for Ch. 6 must be submitted by 11:59 PM on Sunday, July 20
6	07.21 - 07.27	Ch. 7	All HW and Chapter Test for Ch. 7 must be submitted by 11:59 PM on Sunday, July 27
7	07.28 - 08.03	Ch. 8	All HW and Chapter Test for Ch. 8 must be submitted by 11:59 PM on Sunday, August 3
8	08.04 - 08.07	Ch. 9a	All HW and Chapter Test for Ch. 9a must be submitted by 11:59 AM on Thursday , Aug 7
			FINAL EXAM on-campus from either 6:30-8:20 pm on Wednesday August 6 th or from 10:00-11:50 am on Thursday August 7 th

FINAL EXAM

This class requires an on-campus or proctored exam.

A comprehensive final exam will be given the final days of class on Wednesday, August 6th (6:30 pm) or Thursday, August 7th (10:00 am). I will host these two sessions in order to accommodate most of your schedules. Students living ***outside the area (Inland Empire)*** may set up to have an alternate Final Exam administered by a proctor, approved ahead of time, at your expense if expenses are required. If this may apply to you, you **MUST** notify Professor Toner ***by the end of the second week of class, June 27, 2014***. Specific arrangements will be made with those students after July 10th (the "W" drop deadline).

Since there will be some in the class who will not stay in the class the full term, sign-up times for final exams will begin at the end of July, when we have determined how many students are still in the class and will be taking the final exam on-campus. An email will be sent to all remaining students at that time to start scheduling specific times for taking the final exam.

Any proctored exams must be submitted prior to noon on Thursday, August 7th.