
ELEMENTARY ALGEBRA

MATH 50, SPRING 2013 - SECTION #43429 (4 UNITS)
MON & WED, 8:00 AM - 10:05 AM, BLDG. 21, ROOM 157

INSTRUCTOR



Name	STEPHEN TONER
Office	Bldg 31 (Science), office 51
Phone	760.245.4271 ext. 2770
Email	Stephen.Toner@vvc.edu
Websites	www.stevetoner.com, www.MathVideos.Net
Office Hours	MTWTh 7:15 AM - 7:40 AM in my office Tues: 10-11 AM in the <i>Math Success Center</i> (bldg. 42) Wed: 10:40 AM-12:30 PM in the <i>Math Success Center</i> (bldg. 42)

COURSE

DESCRIPTION

Course covers a review of arithmetic operations with whole, decimal, fractional and signed numbers, exponential notation, percentages, and order of operations. Algebraic expressions, solving and graphing linear equations and inequalities, polynomial operations and polynomial factoring, rational and radical expressions and equations, quadratic equations and solutions to quadratic equations are also covered.

PREREQUISITES

Math 10, Math 12 or Math 50A with a grade of "C" or better, or by eligibility by placement on the VVC assessment exam. You may be asked to provide written proof that you have met this prerequisite. Acceptable forms of proof include (but are not limited to) VVC Assessment Test results, WebAdvisor or MicroGrade printout, or prerequisite challenge approval.

TEXTBOOK / MATERIALS



INTRODUCTORY ALGEBRA, 2ND EDITION, BY MILLER/O'NEILL/HYDE.

Online access at <http://www.connectmath.com>. You will need an access code. You can purchase the access code directly from the website (\$80) or from the Rams bookstore (\$109.60).

Online access is required and includes complete digital access to your e-books, videos and homework. Your course Code is **EMFDJ-GADAJ**. You may begin the registration process at ConnectMath beginning August 22nd, but the class will not officially begin until Monday, August 27th.

The 2-week financial aid code for this course is **34327-24C46-05D59-3026B**. Note that it **does not** add an additional two weeks to your course. You will need to extend your account **BEFORE** the end of the two weeks.

HOMEWORK

Practice is a vital component in learning mathematics. Students are to read each section in the e-book and do the assigned work. Videos for each section in the course produced by the textbook company may be found by choosing the Resources tab at the top of your Connect window. I have also created video lecture notes for you.

You may take each homework assignment as many times as you wish, and I will only count the highest grade for each assignment. I will drop the lowest 5 scores from your homework assignments at the end of the semester before calculating your semester grade.

LECTURE NOTES AND VIDEOS

First, you will want to go to www.mathvideos.net, my video website, and click on the Elementary Algebra button. Above each pair of chapters, there is a link to "download blank lecture notes". Please download and print these out. Bring these to class each time we meet.

If you need additional video support, go to www.millerhelp.com and click on the fourth book on the second row (with the mosaic dolphin). This will take you to a whole set of videos produced by the author.

CHAPTER TESTS

We will have 9 chapter tests and one final exam. I will drop your lowest-scoring chapter exam. No calculators, notes or "cheat sheets" may be used on any of the chapter tests.

GRADING

It is your responsibility to be aware of your grade. Your final grade will be determined as follows:

Chapter Tests (lowest score dropped)	50% of your grade	A: [88,100)
Online Homework (5 lowest dropped)	25% of your grade	B: [78,88)
Comprehensive Written Final Exam	25% of your grade	C: [70,78)
		D: [65,70)
		F: [0, 65)



EXTRA CREDIT

No extra credit will be granted beyond the established grading scale. Note that the lowest-scoring test and 5 lowest homework assignments will be dropped prior to computing the term grade.

CALCULATORS

Calculators are not allowed at any time in this course, unless prompted online through Connect. Most of the homework problems have been chosen such that a calculator really should not be needed at all. While I cannot monitor what you are doing at home, you are on your academic honor not to be using one. If it is discovered that you are using one, it will be considered academic dishonesty and you will be turned in to the Office of Student Services for academic dishonesty.



SCHOLASTIC DISHONESTY

While students may work together on the researching of any assignment, it is expected that each of their writing assignments reflect substantial individual effort. Any student who commits plagiarism or is found to have cheated on a scheduled exam is subject to a zero score for that specific exam which may result in a term grade of "F" for this course. Students should be aware that cases of cheating and/or plagiarism will be forwarded to the appropriate college administrator promptly. The college administration has a range of sanctions that may be imposed including, but not limited to, academic suspension or expulsion from the college.

ATTENDANCE

You are required to attend class every day. After 4 hours of absence, you may be dropped from this class. It is your responsibility to keep your enrollment status current. You risk an "F" if you stop attending without officially withdrawing. Do not bring friends or children to class. Please turn any cell phones or pagers to silent mode during class time. No cell phones will be allowed on your desk during exams. We are here to learn; please refrain from texting during class.

Class attendance is not a measure of performance or proficiency. Whether a student is just physically present in the class is not a valid basis for grading. Reference Title 5 Section 55002 of the California Code of Regulations: (A) Grading Policy. The course provides for measurement of student performance in terms of stated course objectives and culminates in a formal, permanently recorded grade based upon uniform standards in accordance with section 55758 of this Division. The grade is based on demonstrated proficiency in the subject matter and the ability to demonstrate that proficiency, at least in part, by means of written expression that may include essays, or, in courses where the curriculum committee deems them to be appropriate, by problem solving exercises or skills demonstrations by students.

STUDENT ACCESS

Students with special needs are encouraged to meet with instructors to discuss the opportunity for academic accommodation and be referred to disabled student program and services per Administrative Procedure (AP 3440).

MISCELLANY

ACADEMIC SUPPORT

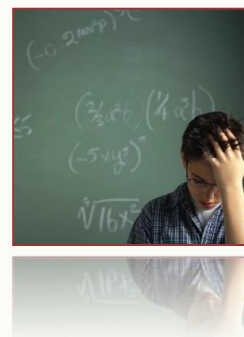
You are strongly encouraged to get tutoring or go to the Math Success Center, study in groups, and see me for help outside of class. All of these are free! Students that get help outside of class are typically much more successful than those that do not.

Regular Math Success Center hours are:

Monday-Friday 9:00 AM - 5:30 PM (starting the second week of class)

The Math Success Center is located in building 42 (the Academic Commons). Outside of these those hours, please go to the information booth at the east end of the Tech building to sign in for tutoring help. The Math Success Center will open the second week of the semester.

My office hours are listed at the start of this syllabus. Appointments are also available if you are unable to meet me at those times.



STUDENT LEARNING OUTCOMES

Upon completion of the course the student can:

1. Graph linear equations and/or inequalities.
2. Factor polynomials.
3. Solve a system of linear equations.
4. Simplify rational expressions.
5. Solve first and/or second-degree polynomial equation

VVC SPRING CALENDAR

Spring Term Begins	Feb. 11
Washington's Day Holiday (college closed)	Feb. 18
Last Day to Drop and still receive a "W"	March 29
Spring Break (college closed)	April 6-14
Memorial Day Holiday (no classes)	May 27
Semester Ends- Final Exam	June 5

CLASS SCHEDULE

An effort will be made to adhere as closely as possible to this schedule. If we can ever “get ahead” of the pace, we will take the opportunity to do so, just in case we need extra time on other material, later in the course. Test dates are fixed, however. They will not change, regardless of our progress through the course.

Sections to be Covered In Class			Sections to be Covered In Class		
M	02.11	Connect, Intro, 1.1, 1.2	M	04.15	6.2, 6.3, 6.4
W	02.13	1.3, 1.4, 1.5, 1.6	W	04.17	6.5, 6.6
M	02.18	Washington's Day Holiday	M	04.22	6.7, 6.8
W	02.20	Review, 2.1, 2.2, 2.3	W	04.24	Review, 7.1, 7.2
M	02.25	2.4, 2.5, 2.6a	M	04.29	Test Ch. 5 & 6
W	02.27	2.7, 2.8	W	05.01	7.3, 7.4
M	03.04	Review, 3.1, 3.2	M	05.06	7.5, review, 7.6,
W	03.06	Test Ch. 1 & 2	W	05.08	7.7, 7.8
M	03.11	3.3, 3.4	M	05.13	Review, 8.1, 8.2, 8.3
W	03.13	3.5, 3.6 (skip 3.7, 3.8)	W	05.15	8.4, 8.5, 8.6 (skip 8.7)
M	03.18	4.1, 4.2, 4.3	M	05.20	9.1 & Review
W	03.20	4.4, 4.5	W	05.22	Test Ch. 7 & 8
M	03.25	Review, 5.1, 5.2	M	05.27	Memorial Day Holiday
W	03.27	Test Ch. 3 & 4	W	05.29	9.2, 9.3
M	04.01	5.3, 5.4, 5.5	M	06.03	Review, Test Chapter 9
W	04.03	5.6, 5.7, 6.1	W	06.05	Final Exam