

---

# COLLEGE ALGEBRA

---

MATH 105 ONLINE, SPRING 2012  
SECTIONS #39094, 39120, AND 39128 (4 UNITS)

---

## INSTRUCTOR

---



Name           STEPHEN TONER  
Office           Bldg 31 (Science), office 51  
Phone           760.245.4271 ext. 2770  
Email           Stephen.Toner@vvc.edu  
Websites       www.stevetoner.com, www.MathVideos.Net  
Office Hours   MTWTh 7:15 AM - 7:40 AM  
                  Wed & Thurs 10:00 AM - 11:15 AM

---

## COURSE

---

### DESCRIPTION

This course covers factoring; radicals and rational exponents; rational expressions; solutions of linear, quadratic, and polynomial equations and inequalities; absolute value equations and inequalities; graphing relations and functions; solutions of systems of equations; exponential and logarithmic functions; conics; partial fraction decomposition; complex numbers; binomial theorem, determinants and matrices of any order; arithmetic and geometric progressions; and proof by mathematical induction.

### PREREQUISITES

Math 90 with a grade of "C" or better, or by eligibility by placement on the VVC assessment exam. You may be asked to provide proof that you have met this prerequisite. Acceptable forms of proof include (but not limited to) VVC Assessment Test results, WebAdvisor or MicroGrade printout, or prerequisite challenge approval.

### TEXTBOOK / MATERIALS

**COLLEGE ALGEBRA, 2ND EDITION, BY JOHN W. COBURN.**

**Choice #1:** Purchase ALEKS-360 online for \$80, tax included. The e-book is included.

**Choice #2:** Purchase ALEKS-360 from VVC bookstore for \$109.60 plus tax (same as choice #1, but you can use your financial aid for the purchase). The e-book is included.

Go to "[www.aleks.com/sign\\_up](http://www.aleks.com/sign_up)" and enter the Course Code: **MAYKQ-MGKR3**. If you have an access code which you purchased at the bookstore (choice #), enter it. Otherwise, click on "purchase an access code online" link (choice #1). Choose the 18-week option.

The 2-week financial aid code for this course is **B9273-BDF40-2FE80-BFCB6**. Note that it **does not** add an additional two weeks to your course; you will need to extend your account **BEFORE** the end of the two weeks.



## HOW TO STUDY AND WORK IN THIS CLASS

---

Obtain your text as described above. When you arrive at the ALEKS web site, take 15-20 minutes to follow the orientation. After that, take the initial assessment. **This is the most important test you will take in the class, as it will determine your starting point in Aleks.**

Next, go to the "My Pie" tab within the ALEKS website. **Work as many of the problems in the light blue (Algebra & Geometry Review) pie slice that you can first**, as these are mainly review topics that you should have mastered before starting into the first chapter's homework. Aleks has artificial intelligence built into it and will give you a customized set of problems to work based upon your personal needs. It will only allow you to do problems that you are ready for. If there are prerequisite skills needed before learning a new problem type, it will make you learn those skills first. As you are ready to study additional topics, they will appear in your pie.

**After** you have filled in as much of the light blue review PIE slice, proceed on to the following...

For each section of the text, download the notes and watch the video I have made for you. These can be found at my video website, [www.MathVideos.Net](http://www.MathVideos.Net). Click on the College Algebra button at that website and find the links to download the notes and watch the videos.

After watching the video for a particular section, go to the homework tab at the Aleks website and start working your homework for that section. **You can then also read your book by clicking on the e-book link at the top of the page in Aleks.**

After you have finished each chapter's homework assigned to you in the Assignments section, click on the "My Pie" tab and start working the Pie problems for the chapter there. The Homework and Tests are of first importance because there are deadlines throughout the course for their completion. However, you also need to keep working to fill in your PIE topics in a timely manner. The only deadline for completion of your PIE is the end of the semester, and it is worth 300 points! The dotted lines in the PIE will act as a guide through the course, suggesting how to pace yourself, but they do not denote specific deadline by which you have to complete the PIE topics.

There is a second way to access your digital textbook. Within each PIE topic, you can click "Explain" to access the text. Aleks will note, however, that you have asked for help and may assign an additional problem or two. I suggest you access your text, instead, by hitting the "Explain" button after submitting Homework assignments to avoid any penalty Aleks may assign.

**Watch the schedule (last page of this syllabus) for all deadlines.** All deadlines are fixed.

You may re-do any of your homework assignments as often as you wish before their deadline to improve your grade. **However, you are only allowed ONE two-hour attempt on each chapter test.** Chapter tests can be found in the homework section and may be taken any time prior to their deadlines. **Do NOT attempt the chapter tests until you are fully-prepared, as you will only be allowed ONE two-hour attempt.** If you accidentally start a test ahead of time, you will not be given a second attempt. Instead, it will need to count as the lowest-scoring chapter test to be dropped from your grade.

## GRADING

---

Your final grade will be determined as follows:

Chapter Tests	150 points	A: [88, 100)
Online Homework	150 points	B: [78, 88)
E-Mail Assignments	25 points	C: [70, 78)
ALEKS Pie Completion	260 points	D: [65, 70)
On-campus Final Exam	200 points	F:[0, 65)



### CHAPTER TESTS

---

Grades for the chapter tests will be based on the eight "chapter tests" (25 points each, with the lowest-scoring chapter dropped). No notes or calculators may be used. Any test not taken will be regarded as a zero. You will only have one two-hour attempt for each chapter test. (Chapters 5 & 6 will be tested together and count as a single test.)

### HOMEWORK

---

Practice is essential. The homework grade will be based on the eight "chapter" scores (25 points for each chapter, with the lowest-scoring chapter dropped). Each student is expected to spend at least 8 hours per week doing homework. You may take each HW assignment as often as you wish; your highest score for each assignment will count toward your grade. (Chapters 5 & 6 will be combined and count as a single chapter.) There will also be five short e-mail assignments worth 5 points each.

### ALEKS PIE COMPLETION

---

After completing the homework for each chapter, start working on the PIE to get extra practice. The dotted lines within the PIE will help you pace yourself through the material and let you know when you have completed the PIE topics which correspond to each chapter.

Every time you complete 20 topics or spend 10 hours working, ALEKS will reassess your progress on material you have recently worked on in order to verify whether you have mastered the material or not (unless it is within 24 hours of a scheduled exam). You may find that it will skip you forward or drop you backward based on the answers you enter.

If you get stuck on a particular problem while working in your ALEKS pie, hitting the explain button may increase the number of exercises you need to get right to complete each topic. Instead, hitting the explain button while you are in the *homework* section of the course will not penalize you. This will also bring up the option to access and save your textbook for further help.

Taking good notes while working through your ALEKS pie will give you valuable examples to look at when you are given periodic assessments (*BUT YOU MAY NOT USE YOUR NOTES DURING AN EXAM!*).

### CALCULATORS

---

*Non-graphing, non-programmable calculators may be used in this class. Aleks will make a graphing calculator available to you on problems which will require that technology, but other than on those few problems, graphing calculators are not allowed.*

## POLICIES

---



### SCHOLASTIC DISHONESTY

While students may work together on the researching of any assignment, it is expected that each of their writing assignments reflect substantial individual effort. Any student who commits plagiarism or is found to have cheated on a scheduled exam is subject to a zero score for that specific exam which may result in a term grade of "F" for this course. Students should be aware that cases of cheating and/or plagiarism will be forwarded to the appropriate college administrator promptly. The college administration has a range of sanctions that may be imposed including, but not limited to, academic suspension or expulsion from the college.

---

**IT IS EXPECTED THAT YOU ARE ALONE WHEN TAKING ANY CHAPTER EXAMS. YOU MAY NOT SEEK ANYONE'S ASSISTANCE DURING THESE EXAMS. THERE SHOULD NOT BE ANYONE LOOKING OVER YOUR SHOULDER HELPING, PROMPTING, OR CORRECTING YOU. IT IS ASSUMED THAT YOU ARE TAKING ALL EXAMS WITHOUT THE AID OF A CALCULATOR, UNLESS ONE IS PROVIDED FOR THAT PARTICULAR PROBLEM WITHIN ALEKS.**

---

## ATTENDANCE

---

If this were an on-campus class, you would be required to attend class every day. After 4 hours of absence, you could be dropped from this class. As an online class, the same rules need to hold. **If you do not log in to Aleks to work on your PIE or do homework for 10 straight days, you will be considered to be excessively absent and may be dropped. It is your responsibility to keep your enrollment status current. You risk an "F" if you stop attending without officially withdrawing.**

*Class attendance is not a measure of performance or proficiency. Whether a student is just physically present in the class is not a valid basis for grading. Reference Title 5 Section 55002 of the California Code of Regulations: (A) Grading Policy. The course provides for measurement of student performance in terms of stated course objectives and culminates in a formal, permanently recorded grade based upon uniform standards in accordance with section 55758 of this Division. The grade is based on demonstrated proficiency in the subject matter and the ability to demonstrate that proficiency, at least in part, by means of written expression that may include essays, or, in courses where the curriculum committee deems them to be appropriate, by problem solving exercises or skills demonstrations by students.*

### STUDENT ACCESS

*Students with special needs are encouraged to meet with instructors to discuss the opportunity for academic accommodation and be referred to disabled student program and services per Administrative Procedure (AP 3440).*

***If you have a learning disability or physical need that requires special accommodation, please advise me prior to 02-20-12 (the start of the second week of class).***

## MISCELLANY

---

### ACADEMIC SUPPORT

---

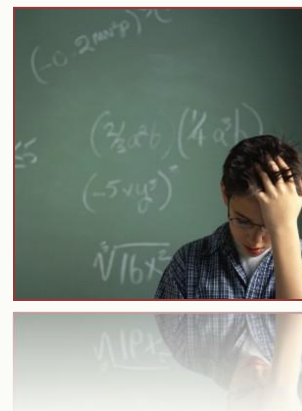
You are strongly encouraged to get tutoring or go to the Math Lab, study in groups, and see me for help outside of class. All of these are free! Students that get help outside of class are typically much more successful than those that do not.

Regular Math Lab hours are:

Monday-Thursday      12:45 PM - 9:00 PM

The Math Lab is located in room 21-157 (in the Advanced Technology Center). Outside of those hours, please go to the information booth at the east end of the Tech building to sign in for tutoring help.

My office hours are listed at the start of this syllabus. Appointments are also available if you are unable to meet me at those times.



### STUDENT LEARNING OUTCOMES

---

Upon completion of the course the student can:

1. Recognize, graph and compute zeros for polynomial, rational, radical, logarithmic and exponential equations.
2. Apply matrix algebra to determine the solution of a system of equations and inequalities
3. Apply concepts of analytic geometry to the conic sections.
4. Manipulate geometric and arithmetic sequences.

### EXTRA CREDIT

---

No extra credit will be granted beyond the established grading scale. Note that the lowest-scoring chapter of both the chapter tests and homework will be dropped prior to computing the term grade. Also note that the homework and PIE completion portions of your grade are fully within your control, based upon your effort.

## VVC SPRING CALENDAR

---

<b>SPRING Term Begins</b>	<b>Feb 13</b>
<b>Lincoln Day Holiday (college closed)</b>	<b>Feb 17</b>
<b>College Closed (no classes)</b>	<b>Feb 18</b>
<b>Washington Day Holiday (college closed)</b>	<b>Feb 20</b>
<b>Last Day to Drop and still receive a "W"</b>	<b>March 30</b>
<b>Spring Break Holiday (college closed)</b>	<b>April 6</b>
<b>College Closed (no classes)</b>	<b>April 7</b>
<b>Spring Break (no classes - offices open)</b>	<b>April 9-13</b>
<b>College Closed (no classes)</b>	<b>April 14</b>
<b>Memorial Day Holiday (college closed)</b>	<b>May 28</b>
<b>Commencement</b>	<b>June 8</b>
<b>Spring Semester Ends</b>	<b>June 9</b>

## SCHEDULE

---

Take *special note* that while the homework for each unit will be due every few weeks, the *tests dates are set up for two chapters at a time*. This is because I have video reviews covering two chapters at a time at the MathVideos.Net web site. You may take any of the tests ahead of time if you wish, but not after the deadlines.

Week	Dates	Section	Deadline
0		Review Topics	Aleks course becomes available on Monday, Feb. 8th, 2012
1	02-13 - 02.18	Review Topics; Start Ch. 1	
2	02.19 - 02.25		
3	02.26 - 03.03	Finish Ch. 1; Start Ch. 2	All HW for Ch. 1 must be submitted by 11:59 PM on Sunday, March 4
4	03.04 - 03.10		
5	03.11 - 03.17	Finish Ch. 2	All HW (Ch. 2) must be submitted by 11:59 PM on Sunday, March 18 Tests for BOTH Chapters 1 & 2 must ALSO be submitted by 11:59 PM on Sunday, March 18
6	03.18 - 03.24	Start Ch. 3	
7	03.25 - 03.31		*March 30th is the last day to drop the course and still receive a "W" grade
8	04.01 - 04.07	Finish Ch. 3; Start Ch. 4	All HW for Ch. 3 must be submitted by 11:59 PM on Sunday, April 15
	04.08 - 04.14	-	<b>Spring Break</b>
9	04.15 - 04.21	Finish Ch. 4	All HW (Ch. 4) must be submitted by 11:59 PM on Sunday, April 22 Tests for BOTH Chapters 3 & 4 must ALSO be submitted by 11:59 PM on Sunday, April 22
10	04.22 - 04.28	Start Ch. 5-6	
11	04.29 - 05.05		
12	05.06 - 05.12	Finish Ch. 5-6	All HW (Ch. 5-6) must be submitted by 11:59 PM on Sunday, May 13 Tests for combined Chapters 5 & 6 must be submitted by 11:59 PM on Sunday, May 13
13	05.13 - 05.19	Start Ch. 7	
14	05.20 - 05.26	Finish Ch. 7	All HW for Ch. 7 must be submitted by 11:59 PM on Tuesday, May 29
15	05.27 - 06.02	Start Ch. 8	
16	06.03 - 06.08	Finish Ch. 8; Final Exam	All HW (Ch. 8) must be submitted by 11:59 PM on THURS, June 7 Tests for BOTH Chapters 7 & 8 must ALSO be submitted by 11:59 PM on THURS, June 7
			<b>ALEKS PIE</b> work to be completed by noon on Friday, June 8 at 8:00 am. At that time, the percentage of the pie completed will be attributed to your grade.
	June 8		<b>FINAL EXAM</b> on-campus 8:00-noon(for those who have not completed it earlier)

## FINAL EXAM

---

A comprehensive final exam will be given the final day of class on Friday, June 8th. If you are finished with the course early, you may schedule a time to take the final exam in one of Professor Toner's on-campus classes at 8 am during the last week of class, June 6-7.

Since there will be some in the class who will not stay in the class the full term, sign-up times for final exams will begin in April, after the last day to drop the course with a "W" grade, when we have determined how many students will be taking the final exam. An email will be sent to all remaining students at that time to start scheduling specific times for taking the final exam.

Students living *outside the area (Inland Empire)* may set up to have an alternate Final Exam administered by a proctor, approved ahead of time. If this may apply to you, you **MUST** notify Professor Toner *by the end of the third week of class, March 3, 2012*. Specific arrangements will be made with those students after March 30th (the "W" drop deadline).