

ELEMENTARY ALGEBRA

MATH 42, WINTER 2016- BLDG. 21, ROOM 157 (4 UNITS)
SECTION #56713 - MON-THURS 8:00 AM - 10:30 AM

INSTRUCTOR



Name	STEPHEN TONER
Office	Bldg. 31 (Science), office 51
Phone	760.245.4271 ext. 2770
Email	Stephen.Toner@vvc.edu (see email policy on last page)
Websites	www.stevetoner.com, www.MathVideos.Net
Office Hours	by appointment during winter

COURSE

DESCRIPTION

Course covers a review of arithmetic operations with whole, decimal, fractional and signed numbers, exponential notation, percentages, and order of operations. Algebraic expressions, solving and graphing linear equations and inequalities, polynomial operations and polynomial factoring, rational and radical expressions and equations, quadratic equations and solutions to quadratic equations are also covered.

PREREQUISITES

Math 12 with a grade of “C” or better, or by eligibility by placement on the VVC assessment exam.

TEXTBOOK / MATERIALS



INTRODUCTORY ALGEBRA, 3RD EDITION, BY MILLER/O'NEILL/HYDE.

Online access at Connect Math, accessed through Blackboard. You will need an access code. You can purchase the access code directly from the website (\$95.00 with optional \$15 “print upgrade” mailed directly to your home), or from the Rams bookstore (\$126.75 for the access code only), or packaged with a loose-leaf version of the text (\$175.50).

Online access is required and includes complete digital access to your e-books, videos and homework. Your course Code is **QD9PD-9JLNN**. You may begin the registration process at Connect Math beginning December 30th, but the class will not officially begin until Monday, January 4th.

The 2-week financial aid code for this course is **6BB56-2F867-8510A-039D9** (those are zeroes, not the letter O). Note that it **does not** give add an additional two weeks to your course. You will need to extend your account BEFORE the end of the two weeks. (See the last page of the syllabus for further instructions.)

Please refer to the welcome letter for detailed step-by-step directions on accessing and paying for the online access. If you have used Connect Math in the past, log into your account and go to the Edit Profile area in the top right. Choose Change Course Code and enter the course code **QD9PD-9JLNN**. You will still need to purchase access for Math 42.

CALCULATORS

No calculators of any form will be allowed at any time in this course. It pretty much defeats the purpose of learning the material. Cell phone calculators are also not allowed.

HOMEWORK

PRACTICE is a vital component in learning mathematics. You are to do the assigned homework at the Connect Math website. You may take each homework assignment as many times as you wish, and I will only count the highest grade for each. The lowest four HW assignments will be dropped at the end of the term. Homework for each unit will be due the day of that unit test.

TESTS AND FINAL EXAM

There will be nine chapter exams and a cumulative final exam. The one lowest chapter test score will be dropped at the end of the term. There will be no make-ups or re-takes.

GRADING

It is your responsibility to be aware of your grade. Your final grade will be determined as follows:

Online Homework	25% of your grade	A: [88,100)
Unit Exams	45% of your grade (15% each)	B: [78,88)
Final Exam	30% of your grade	C: [70,78)
		D: [65,70)
		F: [0, 65)



ATTENDANCE

YOU ARE REQUIRED TO ATTEND CLASS EVERY DAY. AFTER 4 HOURS OF ABSENCE (2 CLASSES), YOU MAY BE DROPPED FROM THIS CLASS. IT IS YOUR RESPONSIBILITY TO KEEP YOUR ENROLLMENT STATUS CURRENT. YOU RISK AN "F" IF YOU STOP ATTENDING WITHOUT OFFICIALLY WITHDRAWING. DO NOT BRING FRIENDS OR CHILDREN TO CLASS. PLEASE PUT AWAY ALL MP3 PLAYERS AND TURN ANY CELL PHONES TO SILENT MODE DURING CLASS TIME. NO CELL PHONES WILL BE ALLOWED ON YOUR DESK DURING EXAMS. WE ARE HERE TO LEARN; PLEASE REFRAIN FROM TEXTING DURING CLASS.

Class attendance is not a measure of performance or proficiency. Whether a student is just physically present in the class is not a valid basis for grading. Reference Title 5 Section 55002 of the California Code of Regulations: (A) Grading Policy. The course provides for measurement of student performance in terms of stated course objectives and culminates in a formal, permanently recorded grade based upon uniform standards in accordance with section 55758 of this Division. The grade is based on demonstrated proficiency in the subject matter and the ability to demonstrate that proficiency, at least in part, by means of written expression that may include essays, or, in courses where the curriculum committee deems them to be appropriate, by problem solving exercises or skills demonstrations by students.

STUDENT ACCESS

Students with special needs are encouraged to meet with instructors to discuss the opportunity for academic accommodation and be referred to disabled student program and services per Administrative Procedure (AP 3440).

If you have a learning disability or physical need that requires special accommodation, please advise me prior to 01-11-16 (the start of the second week of class).

ACADEMIC SUPPORT

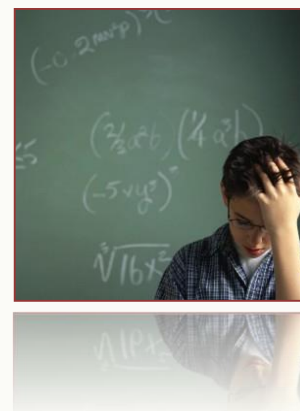
You are strongly encouraged to get tutoring or go to the Math Success Center, study in groups, and see me for help outside of class. All of these are free! Students that get help outside of class are typically much more successful than those that do not.

Regular Math Success Center hours are (tentatively):

Monday-Thursday 8:30 AM - 5:00 PM

The Math Lab is located in building 42 (the Academic Commons), but is likely getting relocated during the winter term. Outside of these those hours, please go to the information booth at the east end of the Tech building to sign in for tutoring help. The MSC will begin operation the second week of the semester.

There are no office hours during winter. I can meet with you after class by appointment.



SCHOLASTIC DISHONESTY



While students may work together on the researching of any assignment, it is expected that each of their writing assignments reflect substantial individual effort. Any student who commits plagiarism or is found to have cheated on a scheduled exam is subject to a zero score for that specific exam which may result in a term grade of "F" for this course. Students should be aware that cases of cheating and/or plagiarism will be forwarded to the appropriate college administrator promptly. The college administration has a range of sanctions that may be imposed including, but not limited to, academic suspension or expulsion from the college.

IMPORTANT NOTES ABOUT TECHNOLOGY



This course requires reliable computer access. Please ensure your computer is in good repair at the start of the semester. It is suggested that before any major assignments, you re-start your browser to clear any memory caches which may cause issues. Java software tends to "junk up" your browser at times. While documented outages may occur, it is the student's responsibility to meet all deadlines in this course. If your internet service at home is unreliable, do not wait until the last day to start assignments. There are plenty of computers that you are able to use on campus.

At the start of the semester, please go to www.connectmath.com/downloads and install the latest versions of many key plug-ins and movie players.

A **common complaint** is "The computer marked me incorrect, but I got it right." If this is the case, I suggest you do the following: Submit the assignment (you can always go back in), and then go into the grade book and compare your answer with what the computer lists. You can often find the error, or learn from your mistake that way.

The Connect Math Tech Support phone number is 1-949-390-2095. They are closed on Saturdays.

VVC CALENDAR



Jan 4	First Day of classes
Jan 10	Last day to drop without receiving a "W" grade
Jan 18	Martin Luther King Holiday
Jan 20	Last day to drop and receive a "W" grade
Feb 11	Last day of winter term

OUR CLASS SCHEDULE

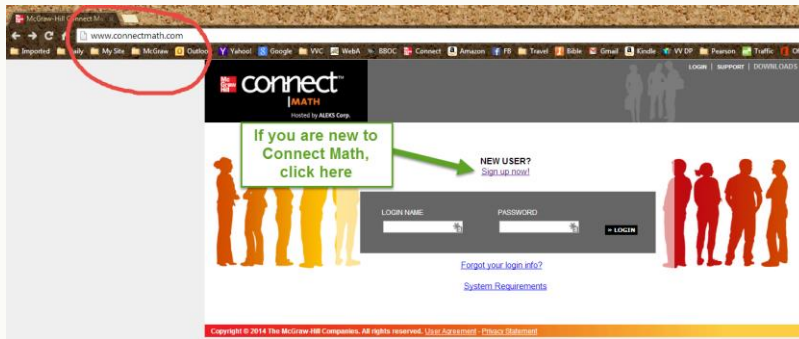
M	1/4	1.1 – 1.6	M	1/25	6.3 – 6.5
T	1/5	1.7 – 1.8, 2.1 – 2.3	T	1/26	6.6 – 6.8
W	1/6	2.4 – 2.6	W	1/27	6.9, Review
Th	1/7	2.7, 2.8, 3.1 – 3.2	Th	1/28	Review, Test Chapters 5,6
M	1/11	Review, Test Chapters 1,2	M	2/1	7.1 – 7.3
T	1/12	3.3 – 3.7	T	2/2	7.4, 7.5
W	1/13	Review, 4.1 – 4.4	W	2/3	Review, 8.1 – 8.3
Th	1/14	4.5 – 4.8	Th	2/4	8.4 – 8.6
M	1/18	Martin Luther King Holiday	M	2/8	Test Chapters 7,8
T	1/19	5.1 – 5.6	T	2/9	9.1 – 9.3
W	1/20	Rev., Test Chapters 3,4	W	2/10	Review
Th	1/21	5.7 – 5.8, 6.1 – 6.2	Th	2/11	Test Chapter 9 and Final Exam

STUDENT LEARNING OUTCOMES

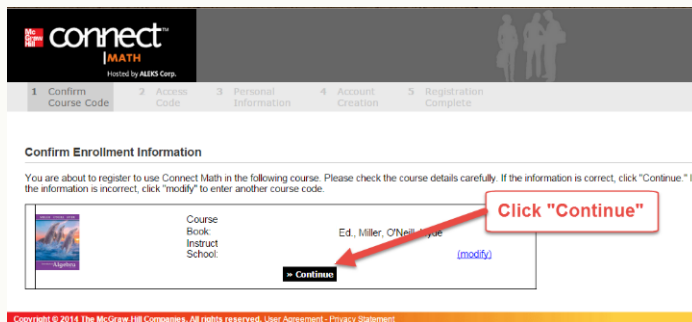
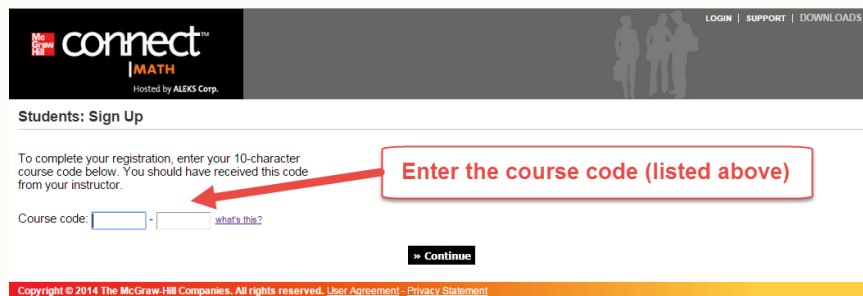
Upon completion of the course the student can:

1. Graph linear equations and inequalities.
2. Factor polynomials.
3. Solve a system of linear equations.
4. Simplify rational expressions.
5. Solve first and/or second-degree polynomial equation
6. Translate words into algebraic expressions and equations.

To register for Connect Math, you will need to follow these steps:



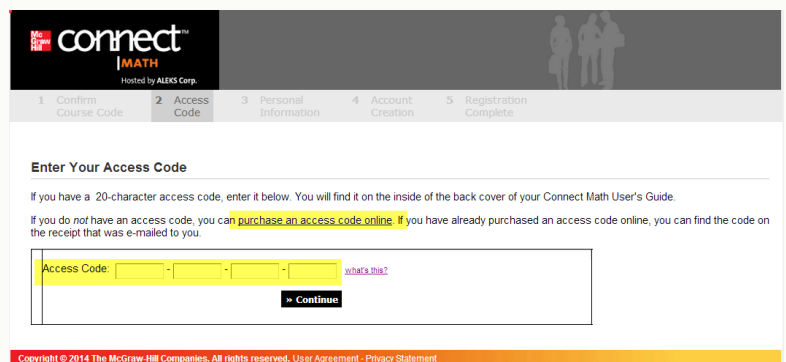
On the next screen, you will need to enter our course code: **QD9PD-9JLNN**. This will get you to our class.



On the next screen, verify you have the course, and then click “continue”.

On the next screen, you will have three options:

1. If you have the \$95 now, click on “purchase an online code online” for the least expensive option.
2. If you have purchased the access code at the bookstore, enter it into the boxes to gain your access.
3. If you will have one of the above in the next couple of weeks, but not right now, then...



There is a two-week **free** access code to get into Connect Math. It is **6BB56-2F867-8510A-039D9** (those are zeroes, not the letter O). Note that it does not give add an additional two weeks to your course. You will need to extend your account **BEFORE** the end of the two weeks.

EMAIL

I do my best to answer all emails as quickly as I can, but sometimes it can be difficult.

You would not believe how many unidentified emails I receive on a regular basis... as a result, I have established this policy to help me provide you with the quickest, most reliable response.

Send all emails to Stephen.Toner@vvc.edu.

★ ★ Prof. Toner's Email Policy ★ ★

Please read carefully the set of rules applicable to all emails you may send me.

The subject line (title) of the email must include the following information:

- 1 your first and last name
- 2 your class name, meeting days and times
- 3 the reason for emailing.



Examples:

- Jessica Jones, Math 90 MW 8 AM, out sick today ✓
- Jessica Jones, Math 42 online, about my chapter 3 test ✓

Do not email asking questions that can be answered by reading the syllabus. For example, please do NOT email me questions such as, "Can I take the test at a later date?" or "When is the final exam?"

Write emails using proper grammar, punctuation and capitalization. In other words, do not text me. Emails that don't follow these guidelines may not be answered.