

# COLLEGE ALGEBRA

MATH 105, FALL 2017- BLDG. 21, ROOM 145 (4 UNITS)  
SECTION #63283 - TUES 8:00 AM - 10:05 AM - HYBRID

## INSTRUCTOR



Name STEPHEN TONER  
Office Bldg. 31 (Science), office 51 (north side, second from end)  
Phone 760.245.4271 ext. 2770  
Email Stephen.Toner@vvc.edu (see email policy on last page)  
Websites www.stevetoner.com, www.MathVideos.Net  
Office Hours Mon through Thurs: 7:10 AM - 7:50 AM  
Mondays: 2:45 - 3:15 PM  
Tuesdays: 10:15 - 12:00 PM

## COURSE

### DESCRIPTION

The course offers a review of real numbers, real number exponents, and factoring polynomials. The course also covers equations, inequalities, solutions to systems of equations and inequalities, solutions to equations and inequalities involving absolute values, graphing relations and functions, matrices, determinants of matrices, matrix algebra. Complex numbers, the real and complex zeros of polynomials, the zeros of exponential, rational and radical functions, the conic sections, sequences, mathematical induction and the binomial theorem are also covered. (CSU, UC credit limitation)

### PREREQUISITES

Math 90 or 90-S with a grade of "C" or better, or by eligibility by placement on the VVC assessment exam. If you have not met this prerequisites, you will likely be administratively dropped within the first week of class.

### TEXTBOOK / MATERIALS

COLLEGE ALGEBRA, 2ND EDITION, BY JULIE MILLER



Online access at Connect Math, accessed through Blackboard. You will need an access code. Here are your options for purchasing a text and/or access:

- purchase the access code directly from the website (\$104.00 with optional \$15 "print upgrade" mailed directly to your home), or
- purchase the access code directly from the Rams bookstore (\$142.50 for the access code only), or
- you can purchase a loose leaf paper version with the access code from the bookstore for \$150.69.

**Online access is required** and includes complete digital access to your e-books, videos and homework. Your course Code is **QFK6H-3VHCY**. See the last page of the syllabus for formal instructions.

The 2-week financial aid code for this course is **CB48D-2974C-5C76A-0C5EF** (that is a zero in the last grouping, not the letter "O"). Note that it **does not** give add an additional two weeks to your course. You will need to extend your account **BEFORE** the end of the two weeks.

We will be doing some work at the board for extra practice on occasion. I will provide blue dry erase markers. If you wish to have a special color to assert your individuality, please bring one to class.

I will often use the free app **Socrative** (student version, available for free from iTunes or Google Play) to take attendance, for a class activity, or to get your feedback. Please have this app downloaded on your wireless device by the second class meeting.

New this semester: I suggest you download the free app **DisplayNote** to be able to get most of the things written down in class sent directly to your device.

## CALCULATORS

Non-graphing calculators are permitted in this course. The text will be illustrating problems using a graphing calculator on occasion; however, I am primarily assigning problems that will only require a non-graphing calculator, if any at all. While we will use apps during class for other purposes, no calculators (or cell phones) will be allowed on any exams, whether online or on-campus.

## THE HYBRID / "FLIPPED" CLASS FORMAT

"Hybrid" means that your class is partially on-campus and partially online. This class will be different from any of your other math classes because you will be taking your lecture notes and doing some preliminary homework at home BEFORE you come to class. In class, we will expand on what you have already learned and practiced online. The goal is to provide an active-learning environment in the classroom rather than a static "listen to the teacher talk" environment. We will do this through review, discussion, classroom exercises and activities.

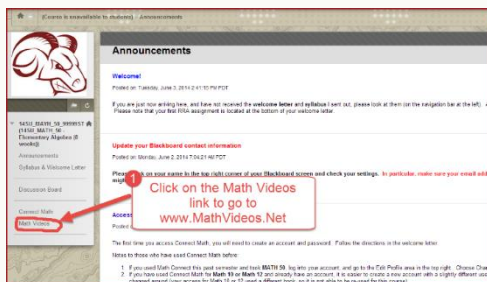
## HOMEWORK

PRACTICE is a vital component in learning mathematics. You are to read each section in the book, take lecture notes (see below) and do the assigned homework at the Connect Math website. You may take each homework assignment as many times as you wish, and I will only count the highest grade for each.

**There will be two types of homework assignments:** "Video HW Assignments" which mirror the lecture notes and are due before you arrive at class, and "Review HW Assignments" which are a scrambled, combined extension and additional practice of the material after class. I will drop the 4 lowest scores from your Video Homework assignments and the 2 lowest scores from your Review Homework assignments at the end of the semester before calculating your semester grade.

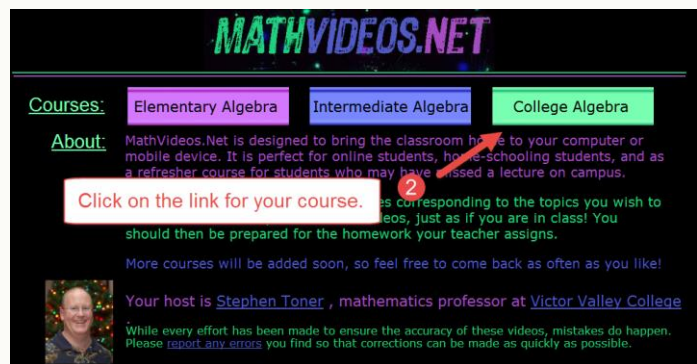
## LECTURE NOTES AND VIDEOS

First, you will want to go to [www.mathvideos.net](http://www.mathvideos.net), my video website, and click on the Elementary Algebra button. Above each pair of chapters, there is a link to "download blank lecture notes". Please download and print these out. For each lecture in the table, there is a video lecture I have created to teach you the material. **Watch the videos and take lecture notes just as if you were in class. This is an essential part of the class.**



Within Blackboard, click on the Math Videos link in the Navigation panel.

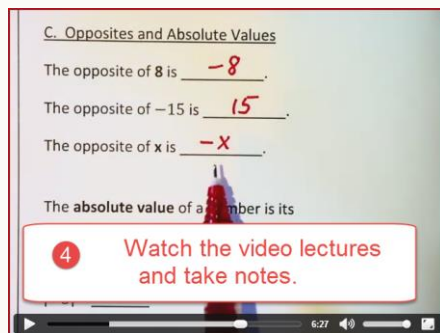
Enter your class at [www.MathVideos.Net](http://www.MathVideos.Net).



Download a blank set of lecture notes for the current chapters.

Click on the title of each video to watch each video normally. Click on the closed-caption links to watch them closed-captioned (might not work with Internet Explorer).

Notes	Chapters 1-2	Click HERE to download (and print) the Chapters 1-2 notes which correspond to the video lecture links below.	CC link
Section	Length	Topic	
1.1	8:18	Sets of Real Numbers	CC
1.2	22:09	Operations With Real Numbers	CC
1.3, 1.4	11:59	Adding and Subtracting Signed Numbers	CC
1.5	16:47	Multiplying and Dividing Signed Numbers	CC
2.4	19:08	Word Problems Involving Linear Equations	CC
2.5	12:36	Percent Sentence Problems	CC
2.6	16:47	Solving Literal Equations, Word Problems Involving Linear Equations and Geometry	CC
2.7	25:40	Mixture Problems; Motion Problems	CC



Watch the videos and take notes, just as in class, except that you now can hit pause and rewind!

## QUIZZES

There will be online "practice quizzes" due before each class meeting, as well as on-campus quizzes during most class meetings, excluding the days you take the midterm and final exams. You may take the practice quizzes over again until you are satisfied with the score. Content on the practice quizzes will not be the same as that of the on-campus quizzes.

## CHAPTER TESTS

We will have 7 online chapter tests (chapters 5 and 6 are combined as a single "chapter"), one midterm, and one final exam. I will drop your lowest-scoring chapter test. You will get ONE 120-minute attempt at each chapter test. It is highly recommended that you re-start your browser before taking any online tests, especially if you have been online a long time.

No graphing calculators will be allowed for use on any of the chapter tests, midterm or final exam. You may use a 3" x 5" cheat sheet on both the midterm and final exam, on which you may handwrite on both sides (no shrinking from a copy machine allowed).

## STUDENT ACCESS

Students with special needs are encouraged to meet with instructors to discuss the opportunity for academic accommodation and be referred to disabled student program and services per Administrative Procedure (AP 3440).

If you have a learning disability or physical need that requires special accommodation, please advise me prior to 09-04-17 (the start of the second week of class).

## DISCUSSION BOARD

You are expected to participate in each of the weekly discussion boards which will be located at the Blackboard site for the class. Each week you should post in the discussion board forum as directed. Each of your posts should **contribute** to the conversation and not just be a short "LOL" type of post. Most of the boards (other than the social forum) will be set up so that you cannot view your classmates' posts until you have posted yourself. Please **read the prompts carefully**; some weeks you will need to respond to one of your classmates' posts in addition to your own post. Discussion board posts will be due every **Saturday** night at 11:59 PM in Blackboard.

## ACADEMIC SUPPORT

You are strongly encouraged to get tutoring or go to the Math Success Center, study in groups, and see me for help outside of class. All of these are free! Students that get help outside of class are typically much more successful than those that do not.

Regular Math Success Center hours are (Fall 2017):

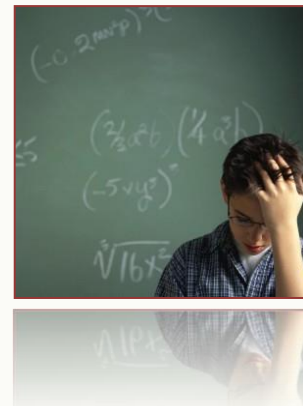
Monday - Thursday: 9:00 AM - 8:00 PM

Fridays: 9:00 AM - 5:30 PM

The Math Success Center is located in building 21, room 146.

There will also be several Math 105 workshops weekly in room 21-145. Please refer to the flyer given out in class for dates and times.

My office hours are listed at the start of this syllabus. Appointments are also available if you are unable to meet me at those times. Online office hours are also available...



## SCHOLASTIC DISHONESTY

While students may work together on the researching of any assignment, it is expected that each of their writing assignments reflect substantial individual effort. Any student who commits plagiarism or is found to have cheated on a scheduled exam is subject to a zero score for that specific exam which may result in a term grade of "F" for this course. Students should be aware that cases of cheating and/or plagiarism will be forwarded to the appropriate college administrator promptly. The college administration has a range of sanctions that may be imposed including, but not limited to, academic suspension or expulsion from the college.

## ATTENDANCE

YOU ARE REQUIRED TO ATTEND CLASS EVERY DAY. AFTER 4 HOURS OF ABSENCE, YOU MAY BE DROPPED FROM THIS CLASS. IT IS YOUR RESPONSIBILITY TO KEEP YOUR ENROLLMENT STATUS CURRENT. YOU RISK AN "F" IF YOU STOP ATTENDING WITHOUT OFFICIALLY WITHDRAWING. DO NOT BRING FRIENDS OR CHILDREN TO CLASS. PLEASE TURN ANY CELL PHONES OR PAGERS TO SILENT MODE DURING CLASS TIME. NO CELL PHONES WILL BE ALLOWED ON YOUR DESK DURING EXAMS. WE ARE HERE TO LEARN; PLEASE REFRAIN FROM TEXTING DURING CLASS.

*Class attendance is not a measure of performance or proficiency. Whether a student is just physically present in the class is not a valid basis for grading. Reference Title 5 Section 55002 of the California Code of Regulations: (A) Grading Policy. The course provides for measurement of student performance in terms of stated course objectives and culminates in a formal, permanently recorded grade based upon uniform standards in accordance with section 55758 of this Division. The grade is based on demonstrated proficiency in the subject matter and the ability to demonstrate that proficiency, at least in part, by means of written expression that may include essays, or, in courses where the curriculum committee deems them to be appropriate, by problem solving exercises or skills demonstrations by students.*



## IMPORTANT NOTES ABOUT TECHNOLOGY



This course requires reliable computer access. Please ensure your computer is in good repair at the start of the semester. It is suggested that before any major assignments, you re-start your browser to clear any memory caches which may cause issues while testing. While documented outages may occur, **it is the student's responsibility to meet all deadlines in this course.** If your internet service at home is unreliable, do not wait until the last day to start assignments. There are plenty of computers that you are able to use on campus.

At the start of the semester, please go to [www.connectmath.com/downloads](http://www.connectmath.com/downloads) and install the latest versions of many key plug-ins and movie players. **Connect Math seems to work best on the Chrome and Firefox browsers.** Some students have reported issues while using Internet Explorer.

## VVC CALENDAR



Aug 28	First Day of classes
Sept 4	Campus Closed - Labor Day Holiday
Sept 10	Last day to drop without receiving a "W" grade
Oct. 14	Last day to drop and receive a "W" grade
Nov 23	Campus closed - Thanksgiving
Dec 16	Last day of fall term (Dec. 14 <sup>th</sup> for our class)

## STUDENT LEARNING OUTCOMES

Upon completion of the course the student can:

1. Recognize, graph and compute zeros for polynomial, rational, radical, logarithmic and exponential equations.
2. Apply matrix algebra to determine the solution of a system of linear equations.
3. Apply concepts of analytic geometry to the conic sections.
4. Demonstrate knowledge of geometric and arithmetic sequences.

## OUR CLASS SCHEDULE

	In-Class Activity	Do After Class	Have Completed Before Next Class
T	8.29	Introduction	Video HW 1.1-1.4; practice quiz 1.1-1.4
T	9.05	Sections 1.1-1.4	Review HW 1.1-1.4
T	9.12	Sections 1.5-1.7	Review HW 1.5-1.8
		*Chapter 1 online test due by Saturday night, Sept. 16	
T	9.19	Sections 2.1-2.4	Review HW 2.1-2.4
T	9.26	Sections 2.5-2.8	Review HW 2.5-2.8
		*Chapter 2 online test due by Saturday night, Sept. 30	
T	10.03	Sections 3.1-3.4	Review HW 3.1-3.4
T	10.10	Sections 3.5-3.7	Review HW 3.5-3.7
		*Chapter 3 online test due by Sunday night, Oct. 15	
T	10.17	<b>Midterm - Covers Chapters 1-3</b>	
T	10.24	Sections 4.1-4.3	Review HW 4.1-4.3
T	10.31	Sections 4.4-4.6	Review HW 4.4-4.6
		*Chapter 4 online test due by Saturday night, Nov. 4	
T	11.07	Chapter 5	Review HW Chapter 5
T	11.14	Chapter 6	Review HW Chapter 6
		*Chapters 5-6 online test due by Saturday night, Nov. 18	
T	11.21	Chapter 7	Review HW Chapter 7
		*Chapter 7 online test due by Saturday night, Nov. 25 (yes, Thanksgiving weekend...)	
T	11.28	Sections 8.1-8.3	Review HW 8.1-8.3
T	12.05	Sections 8.4-8.5	Review HW 8.4-8.5
		*Chapter 8 online test due by Sunday night, December 10	
T	12.12	<b>Final Exam - Covers Chapters 4-8</b>	

## GRADING

It is your responsibility to be aware of your grade. Your final grade will be determined as follows:

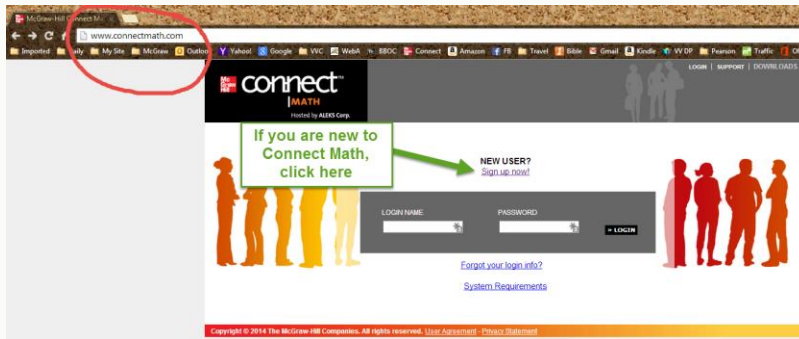
Online Chapter Tests	20% of your grade	A: [88,100)
Online Video Homework	10% of your grade	B: [78,88)
Online Review Homework	10% of your grade	C: [70,78)
Online Practice Quizzes	5% of your grade	D: [65,70)
Online Discussion Board	5% of your grade	F: [0, 65)
On-campus Quizzes	5% of your grade	
Classroom Activities	10% of your grade	
Midterm Exam, Final Exam	35% of your grade	



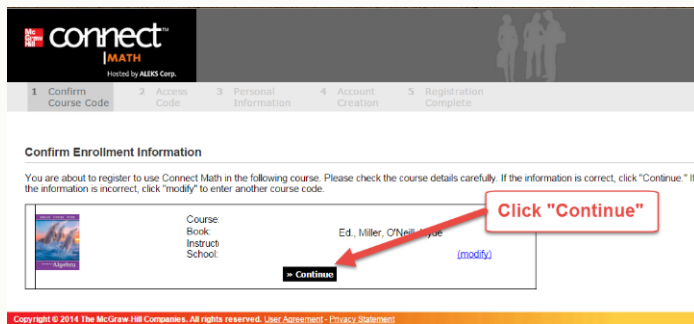
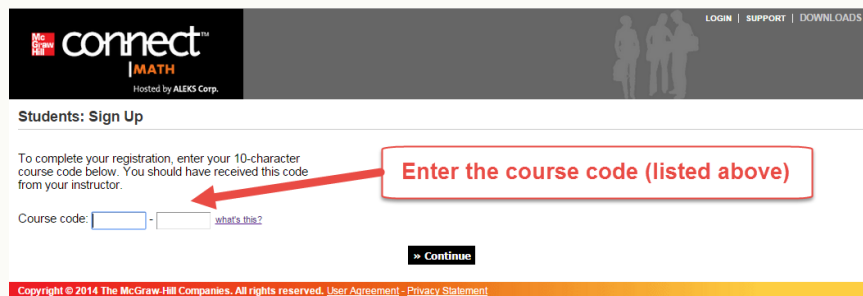
At the **end** of the semester, the **one lowest** grade in each of the grade categories listed above will be dropped prior to computing your term grade, with the following exceptions:

- Your 4 lowest Video Homework grades and the 2 lowest Review Homework grades will be dropped
- No grade will be dropped from the Midterm Exam and Final Exam category

To register for Connect Math, you will need to follow these steps:



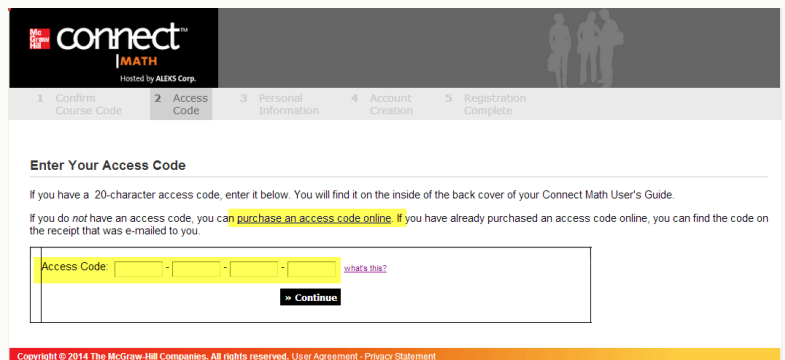
On the next screen, you will need to enter our course code: **QFK6H-3VHCY**. This will get you to our class.



On the next screen, verify you have the course, and then click “continue”.

On the next screen, you will have three options:

1. If you have the \$104 now, click on “purchase an online code online” for the least expensive option.
2. If you have purchased the access code at the bookstore, enter it into the boxes to gain your access.
3. If you will have one of the above in the next couple of weeks, but not right now, then...



There is a two-week **free** access code to get into Connect Math. It is **CB48D-2974C-5C76A-0C5EF** (that is a zero in the last grouping, not the letter “O”). Note that it does not give add an additional two weeks to your course. You will need to extend your account **BEFORE** the end of the two weeks.

# EMAIL

---

I do my best to answer all emails as quickly as I can, but sometimes it can be difficult.

You would not believe how many unidentified emails I receive on a regular basis... as a result, I have established this policy to help me provide you with the quickest, most reliable response.

**Send all emails to [Stephen.Toner@vvc.edu](mailto:Stephen.Toner@vvc.edu).**

\*\*\*\*\*

## Prof. Toner's Email Policy

*Please read carefully the set of rules applicable to all emails you may send me.*

The subject line (title) of the email **must** include the following information:

1. Your first and last name
2. Your class name, meeting days and times
3. The reason for the email

### Examples:

- Jessica Jones, Math 90 online, about my chapter 3 test
- Jessica Jones, Math 120 TTh at 8 am, out sick today

**Do not email asking questions that can be answered by reading the syllabus.** For example, please do NOT email me questions such as "Can I take the test at a later date?" or "When is the final exam?"

Write emails using **proper grammar, punctuation and capitalization**. In other words, do not text me.

Emails that don't follow these guidelines may not be answered quickly.

\*\*\*\*\*

### Prof. Toner's Schedule

I make every effort to respond to emails as quickly as I can, however some days are rather busy, especially on Mondays and Tuesdays.

Emails received after 9:30 or so in the evenings may not receive responses until the next day. On weekends, I generally try respond to emails in the morning and evenings, but response time may be a bit slower in the middle of the day.

Additionally, I will do my best to respond while at conference or traveling, but please understand that there may be delays for such.